

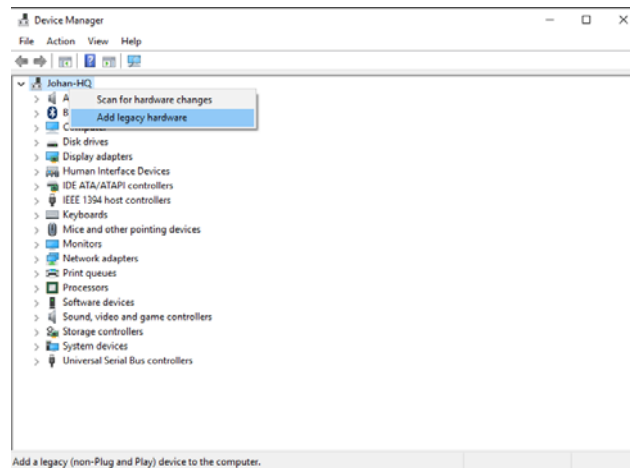
# Virtual Network Card Setup for VT2 Sync

Your computer need to have a valid network (IP address), so our virtual transport can detect VCube and show it in Virtual Transport 2 window.

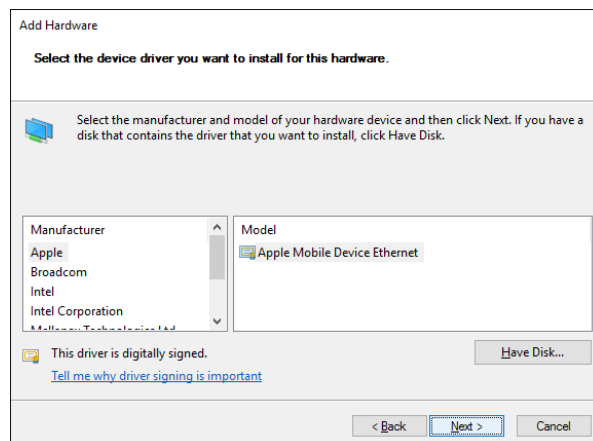
If you don't want or can't have a valid network on your computer, you may create a virtual network card.

Steps:

- Please go in Windows Control Panel > Device Manager.
- Right click on the computer name at the top of the device tree, and select Add legacy hardware.



- Click on Next to continue, and select "Install the hardware that I manually select from a list (Advanced)".
- Select Network Adapters
- Browse to Manufacturer: Microsoft



- Select **Microsoft Loopback adapter**.
  - In Windows 8.1/10 it is called **Microsoft KM-TEST Loopback Adapter**
- Click Next twice
- Click Finish
- Now you can restart the computer. This new network device will now allow the PyraCube configuration to work correctly.